



## REGIONAL SPECIALISED METEOROLOGICAL CENTRE -TROPICAL CYCLONES, NEW DELHI TROPICAL WEATHER OUTLOOK

DEMS-RSMC TROPICAL CYCLONES NEW DELHI DATED 21.07.2025

**TROPICAL WEATHER OUTLOOK FOR THE NORTH INDIAN OCEAN (THE BAY OF BENGAL OF BENGAL AND THE ARABIAN SEA) VALID FOR THE NEXT 168 HOURS ISSUED AT 0600 UTC OF 21.07.2025 BASED ON 0300 UTC OF 21.07.2025.**

### BAY OF BENGAL:

Yesterday's upper air cyclonic circulation over westcentral & adjoining northwest Bay of Bengal off south Odisha north Coastal Andhra Pradesh now lies over south Odisha and neighbourhood at 0300 UTC of today, the 21<sup>st</sup> July, 2025 and extends upto 5.8 km above mean sea level tilting southeastwards with height.

A fresh **Low Pressure area** is likely to form over north Bay of Bengal around 24th July, 2025.

Scattered to broken low and medium clouds with embedded intense to very intense convection lay over central and south Bay of Bengal, Andaman Sea. Scattered low and medium clouds with embedded isolated moderate to intense convection lay over north Bay of Bengal.

### \*PROBABILITY OF CYCLOGENESIS (FORMATION OF DEPRESSION) DURING NEXT 168 HRS:

24 HOURS	24-48 HOURS	48-72 HOURS	72-96 HOURS	96-120 HOURS	120-144 HOURS	144-168 HOURS
NIL	NIL	NIL	NIL	NIL	NIL	NIL

**\*NOTE: EVERY 24HR FORECAST IS VALID UPTO 0300 UTC (0830 IST) OF NEXT DAY**

### ARABIAN SEA:

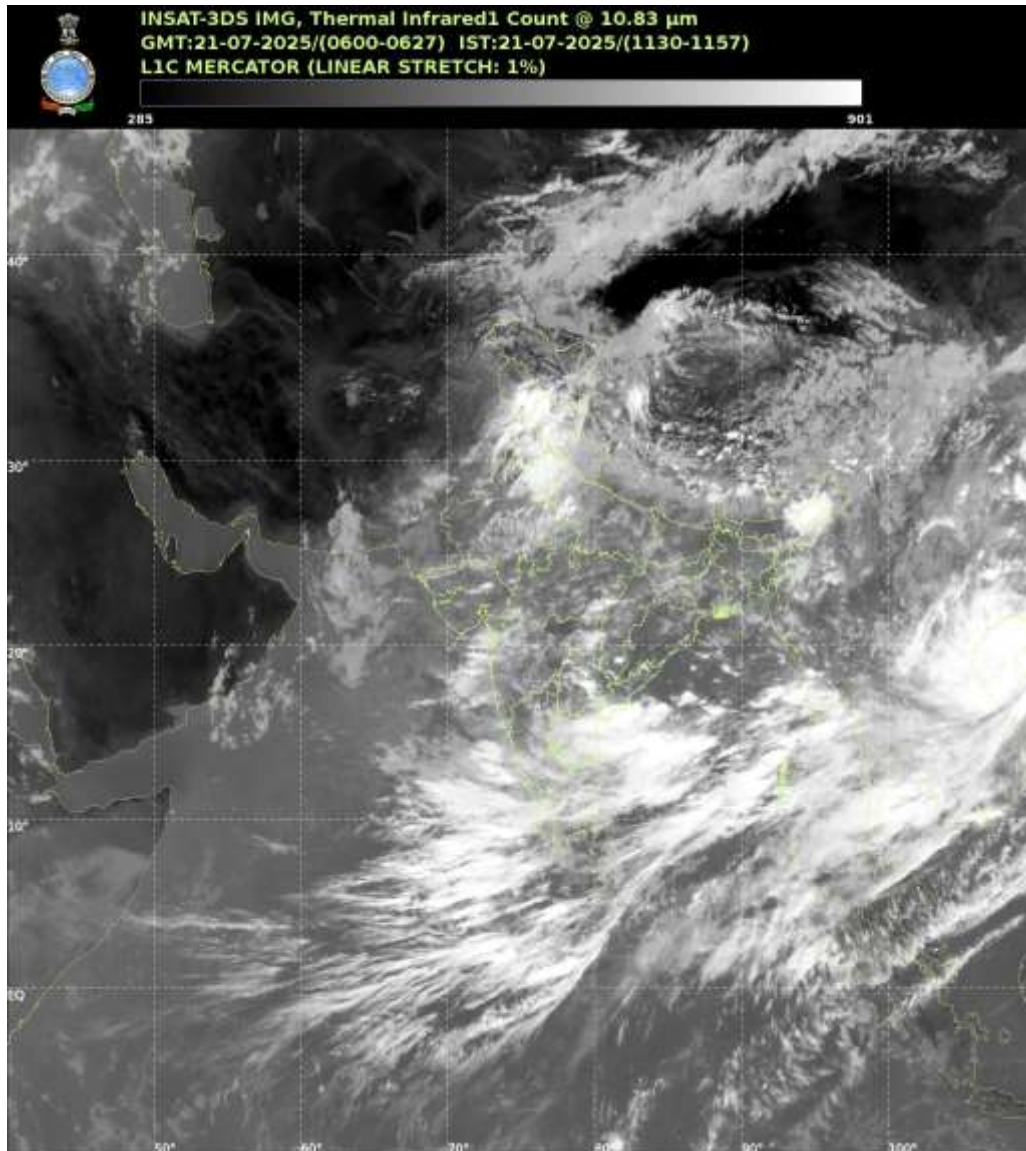
Scattered to broken low and medium clouds with embedded intense to very intense convection lay over southeast adjoining eastcentral Arabian Sea, Lakshadweep Islands area, Maldives & Comorin Area. Scattered low and medium clouds with embedded weak to moderate convection lay over rest of Arabian Sea.

### \*PROBABILITY OF CYCLOGENESIS (FORMATION OF DEPRESSION) DURING NEXT 168 HRS:

24 HOURS	24-48 HOURS	48-72 HOURS	72-96 HOURS	96-120 HOURS	120-144 HOURS	144-168 HOURS
NIL	NIL	NIL	NIL	NIL	NIL	NIL

**\*NOTE: EVERY 24HR FORECAST IS VALID UPTO 0300 UTC (0830 IST) OF NEXT DAY**

**REMARKS:** NIL



Cloud distribution: (a) Isolated: <25%, Scattered:25-50%, Broken: 51-75%, Solid:>75%, Convection Intensity: (a) Weak: Cloud Top Temperature(CTT)>-25°C,(b)Moderate:CTT:-25°Cto-40°C,(c)Intense:CTT: -41°Cto -70°Cand(d)Very Intense::Less than -70°C  
 PROBABILITYOFCYCLOGENESIS(FORMATIONOFDEPRESSION):NIL:0%,LOW:1-33%,MODERATE:34-66%ANDHIGH:67-100%  
 ThisisaguidanceBulletinforWMO/ESCAPPanelMembercountries.VisitrespectiveNationalwebsitesforCountryspecificBulletins